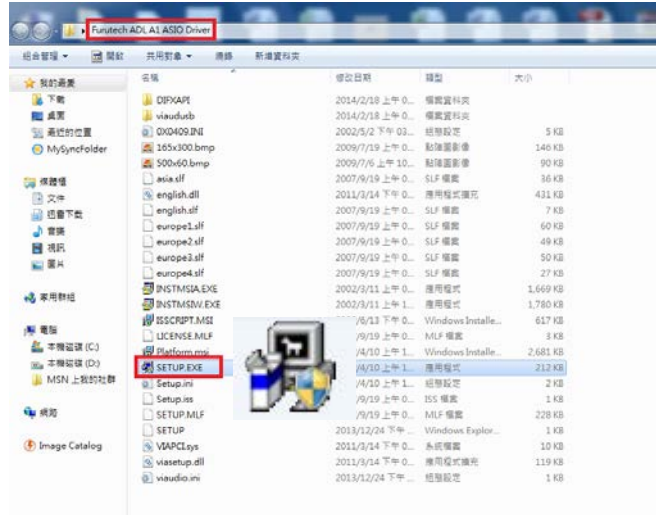


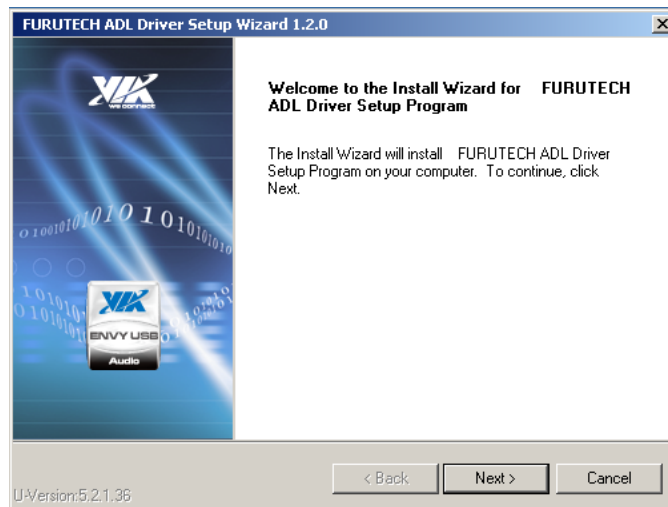
## Furutech ADL GT40α ASIO Driver installation guide for Windows

To install the driver for ADL GT40α:

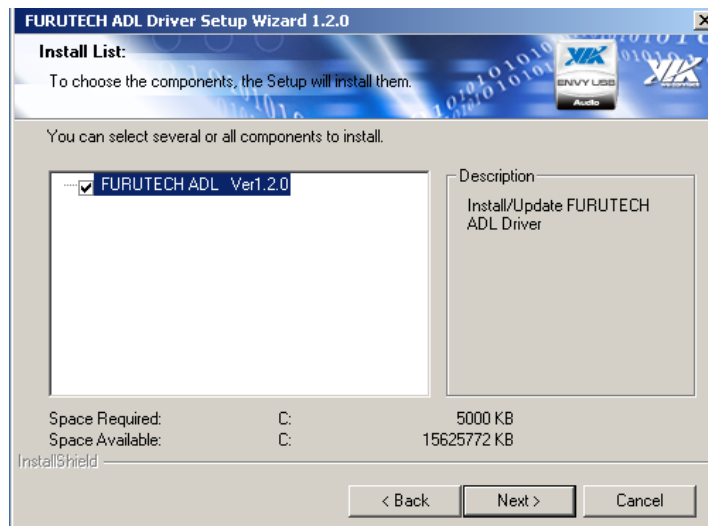
1. Download the driver from the GT40α webpage: <http://www.adl-av.com/products/usbdac/gt40a/>
2. Double-click the .zip file to open and save to hard drive
3. Connect ADL GT40α to PC with a USB cable and switch the GT40α on.
4. Switch on the GT40α should be set to “USB”.
5. Open GT40α Driver folder and double click on SETUP.EXE to install ADL GT40αdriver on the PC.



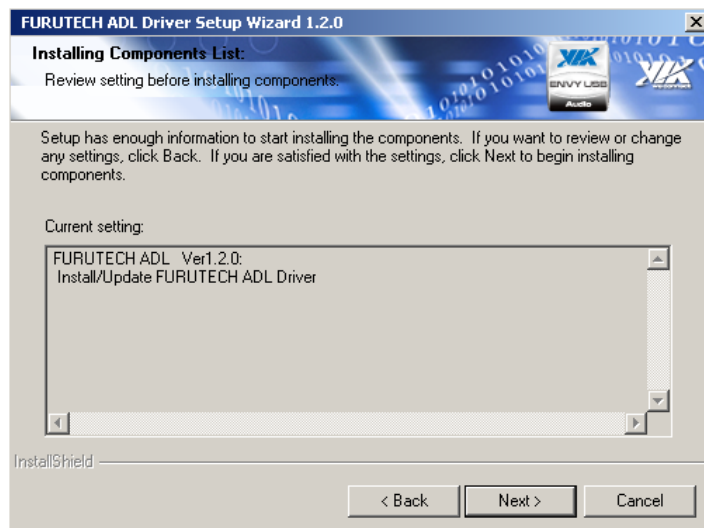
6. Begin the installation process by clicking “Next”



7. Check the box “Furutech ADL Ver1.2.0” and click next

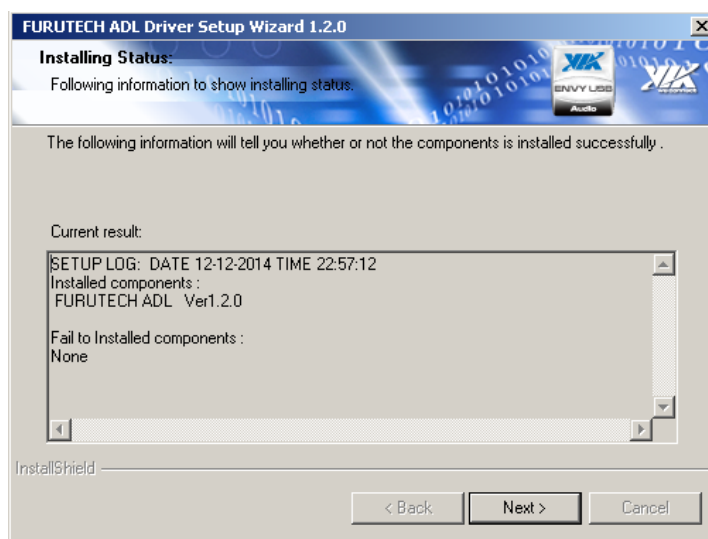


8. Click next



9. Windows will ask for permission to install the driver. Select install.

10. Installation will begin and when complete, you should see the following "Failed to install components: None"



11. Click Next



12. Select "yes" and click "Finish" to restart your computer

Click on the ADL A1 ASIO icon on the Desktop and adjust the ASIO Buffer Size to 15 milliseconds to ensure smooth playback.



DirectKS ASIO Full Duplex Setup

DirectKS Output Ports

Device Name	Active
<input checked="" type="checkbox"/> Speakers - ( FURUTECH ADL GT40a )	Yes

DirectKS Input Ports

Device Name	Active
<input checked="" type="checkbox"/> Line - ( FURUTECH ADL GT40a )	Yes

ASIO Buffer Size

Current Size: 15 milliseconds

Change the size to: 15 milliseconds

Apply